



# ACTIVITY 1

## ACTIVITY OVERVIEW

### Seasons of the Waterman – Make a Mobile

#### Activity Description

Students will examine how animal life cycles and Maryland law determine the seasons of the waterman. They will create a mobile to depict the seasons in a waterman's year.

#### Materials

- Chart
- Mobile Graph
- Species pictures (Students can use pictures from the Activity Guide, or they can draw or look for their own pictures.)
- 9 x 12 inch pieces of construction paper (two per child)  
(12 x 18 inch paper cut in half )
- 6 x 9 inch scraps of construction paper
- Scissors
- Glue
- Pencils, markers, or crayons
- String or yarn
- Hole punches

#### Teacher Background

Creating the mobile is a fun and colorful way for students to comprehend the year-long work of a waterman. The never-ending cycle is illustrated in the circular shape of the mobile with its variety of creatures.

## STUDENT READING

# Seasons of the Waterman

The waterman’s life revolves around the life cycles of his catch. Depending on the season of the year, different species are present in the rivers and the Bay and ready for harvest. The waterman must be aware of what creatures are available to catch as well as the laws that govern how he can carry out his job. The State of Maryland, as well as Virginia, regulate what the waterman may catch and when. That way they try to conserve the resource for the future and ensure that there is enough seafood for everyone to harvest.

Some fish species migrate in and out of the Bay, and the waterman must wait until they get closer to home to catch them. Some of the Bay creatures have been fished until they are almost extinct. Now they may not be caught until they have had time to replenish their numbers. Some rivers and certain areas of the Bay are closed to fishing.

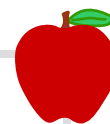
The waterman must use his time wisely. When he is not in his boat, he must repair or clean his equipment. He also changes the equipment he uses as the season determines what he can catch. He would not want a culling board on the boat for oystering if he is using a pound net with poles to catch fish.

As you look at the chart below, you will see a variety of Bay species. Some may be familiar and some may not, but they are a few of the fish regulated by the Maryland Tidal Commercial Regulations. These laws help to ensure the survival of the fishing industry and the livelihood of the waterman.

Species	Season and Equipment	Rules
Striped Bass	June 2 through November 29 Pound Net or Haul Seine	<ul style="list-style-type: none"> <li>• Must have a license</li> <li>• Minimum size: 18–36 inches long</li> <li>• Maximum catch: 1250 lbs./season</li> </ul>

Species	Season and Equipment	Rules
Striped Bass	June 17 through November 28 Hook and Line	<ul style="list-style-type: none"> <li>• Must have a license</li> <li>• Minimum size: 18–36 inches long</li> <li>• May fish one hour before sunrise until one hour before sunset, Tuesday – Thursday</li> <li>• May have up to four people on the boat with two crew members</li> <li>• Maximum catch: 800 lbs./week</li> </ul>
Crabs	April 1 through December 15 Crab Pots or Trotlines	<ul style="list-style-type: none"> <li>• Maximum catch: 25 bushels/day</li> <li>• Must take off either Sunday or Monday</li> <li>• Size restrictions (vary for peelers, soft crabs, and male crabs)</li> </ul>
Soft Shell Clams	Open Year Round Hydraulic Clam Dredge	<ul style="list-style-type: none"> <li>• Minimum size: 2 inches</li> <li>• Maximum catch: May 15 to October 31: 15 bushels/day November 1 to May 14: 8 bushels/day</li> <li>• Must keep clams cool from mid-April through end of October</li> </ul>
Bluefish	Open Year Round Nets (seine, pound, and gill nets)	<ul style="list-style-type: none"> <li>• Must have license</li> <li>• Minimum size: 8 inches long</li> </ul>
Yellow Perch	All Year EXCEPT February	<ul style="list-style-type: none"> <li>• Minimum size: 9 inches</li> <li>• Maximum catch: no limit</li> <li>• Many rivers are closed to perch fishing</li> </ul>
Oysters	October 1 through March 31 Tongs or Diving Monday – Friday only	<ul style="list-style-type: none"> <li>• Must have a license</li> <li>• Shells must be at least 3 inches for tonging and 4 inches for diving</li> <li>• Maximum catch: 30 bushels/day</li> </ul>
	November 1 through March 31 Dredge Pulled by Sail (Skipjack)	<ul style="list-style-type: none"> <li>• Must have a license</li> <li>• Shells must be at least 3 inches</li> <li>• Maximum catch: 150 bushels/day</li> <li>• Limits on days and times to dredge</li> </ul>
Eels	Open Year Round Eel Pots	<ul style="list-style-type: none"> <li>• Minimum size: 6 inches</li> <li>• Maximum catch: no limit</li> </ul>

Based on 2003 Maryland Tidal Commercial Fisheries Regulations



## ACTIVITY – INSTRUCTIONS

# How to Make a Mobile

Find the information you need to make the mobile in the “Seasons of a Waterman” Student Reading and chart.

### Materials

- Mobile Graph
- Species pictures (Use pictures from the Activity Guide, or draw or look for your own pictures.)
- 9 x 12 inch pieces of construction paper (two per child)  
(12 x 18 inch paper cut in half )
- 6 x 9 inch scraps of construction paper
- Scissors
- Glue
- Pencils, markers, or crayons
- String or yarn
- Hole punches

### Preparation of Papers

Graph can be reproduced on card stock or glued to construction paper.

1. Fold the “Mobile Graph” paper in half length-wise. Cut on the dotted line.
2. Glue the two pieces of the graph together to create a graph that goes from January to December. Make sure the lines of the graph match up in the middle. (You may need to trim your graph.) Let dry.
3. Glue the two 9 x 12 inch pieces of construction paper together to make a long rectangle. Let dry.

### Working on the Graph

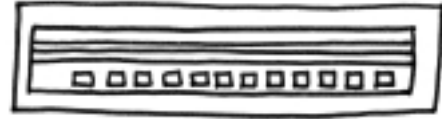
1. Label the first line of the Mobile Graph paper with the words “Seasons of the Waterman.”
2. Choose three Bay species from the chart in the Student Reading, and put the name of each species on the lines under the title, one name per line.
3. For each species: On its line – draw a dot over each month that the species is in season.
4. Use a different color marker for each species. Use the marker to highlight the species name and to connect the dots to create a solid colored line.

*Continued →*



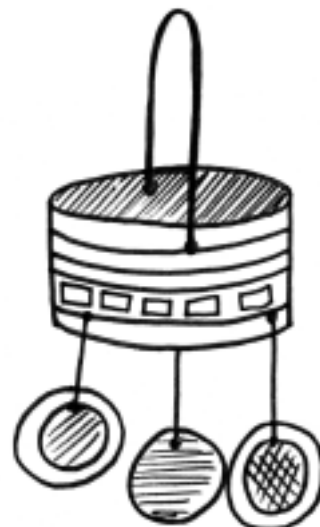
### Putting the Papers Together

1. Glue the Mobile Graph paper to the long piece of construction paper. Center it carefully, making sure you have a colored paper border on the top and bottom and on one end (for gluing purposes). Before gluing, cut off any extra paper at the other end. Glue one end of the construction paper to another to form a circle of paper.
2. Using a hole punch, punch two holes opposite each other in the top of the circle you just made. Slide the hole punch onto the paper as far as you can, so the holes will not tear. Thread a piece of string or yarn through the holes, and tie it in a double knot to create a hanger for your mobile.
3. Punch three holes in the bottom – make sure the three holes are an equal distance apart. This will ensure the mobile pieces hang evenly.
4. Color in the pictures of the species you chose with the correct color, using markers or crayons. Mount the picture onto construction paper. Carefully punch a hole in the top of the construction paper, making sure the hole is not at the edge. Tie string to the species pictures (use a double knot), and then tie each picture to one of the holes in the bottom of the Mobile Graph circle. (If you vary the length of the string, your pictures will show up nicely.)



### Things You Might Add to Your Mobile

1. Add pictures of the type of equipment used to catch the species onto your mobile. (Pictures found in the activity “How to Catch the Catch” will work well.)
2. Write an interesting fact or a paragraph about the species on an index card, and hang this on your mobile.
3. Add underwater items (e.g. seaweed, rocks, shells, blue streamers for water, green strips for SAV’s, etc.) to create an underwater scene.
4. Create your own drawings of the species or cut out pictures to add to the mobile.



MOBILE GRAPH

GLUE HERE

July

August

September

October

November

December

---

---

---

---

---

---

---

---

---

---

---

---

---

---

---

---

June

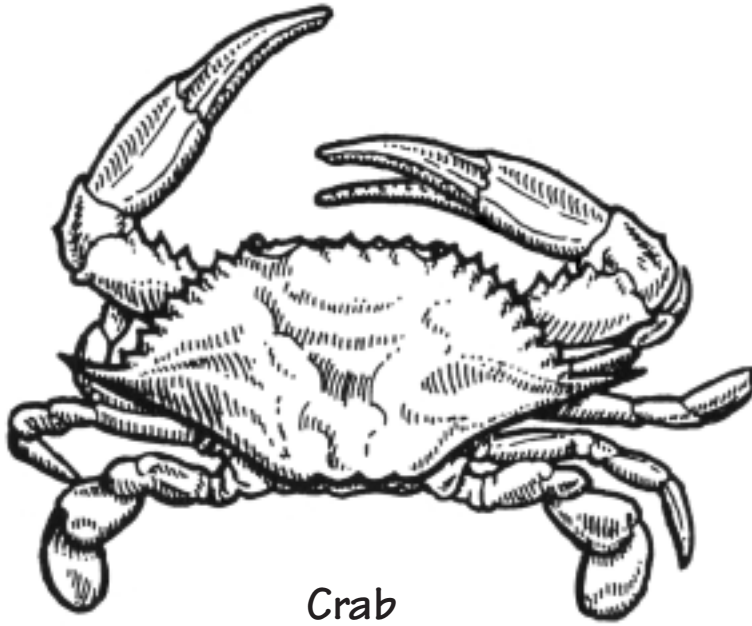
May

April

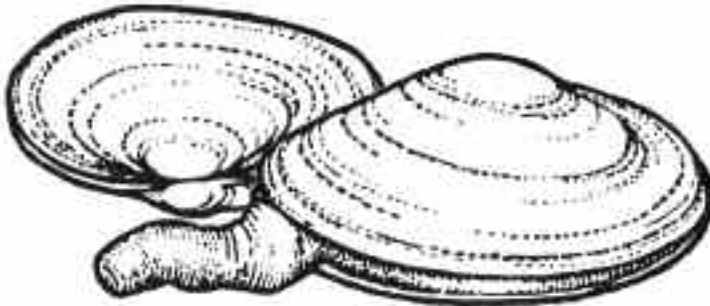
March

February

January



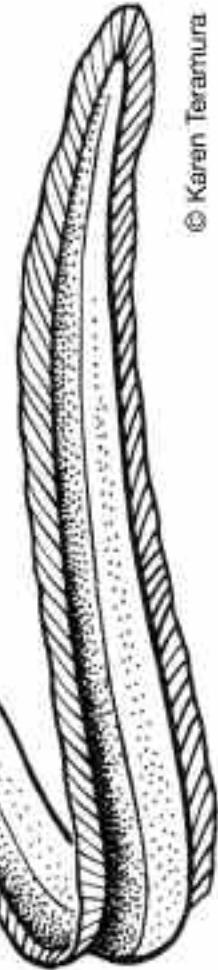
Crab



Soft Shell Clams



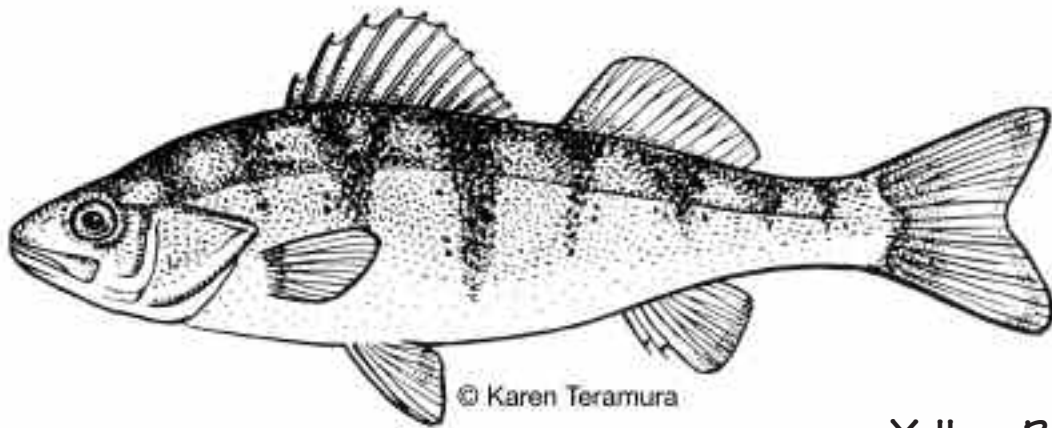
Oyster



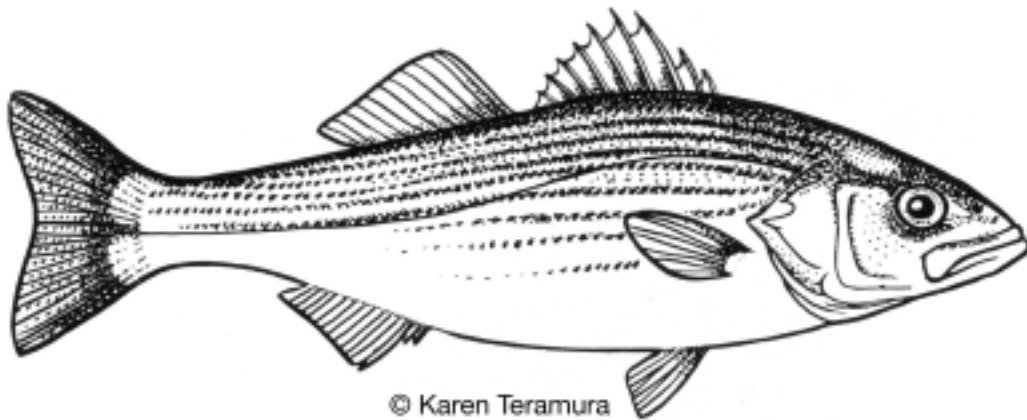
Eel

© Karen Teramura

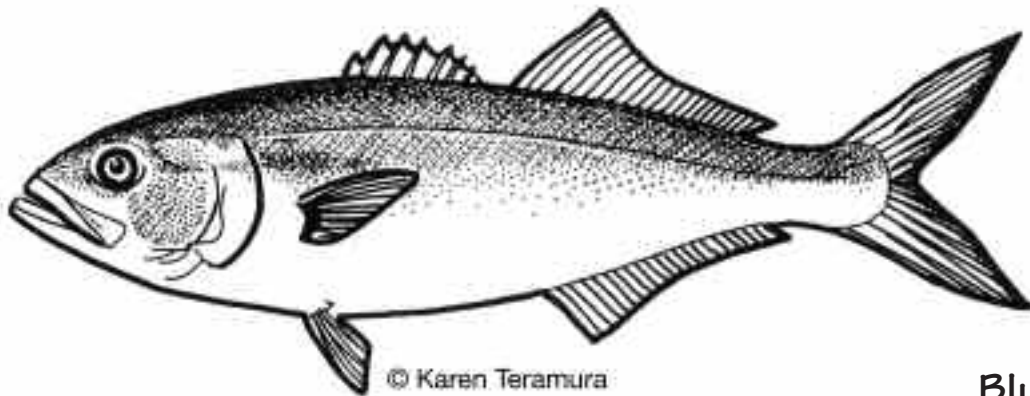
Eel – Courtesy – Karen Teramura – [www.ifa.hawaii.edu/users/teramura](http://www.ifa.hawaii.edu/users/teramura)



Yellow Perch



Striped Bass



Bluefish

Yellow Perch, Striped Bass, and Bluefish – Courtesy – Karen Teramura – [www.ifa.hawaii.edu/users/teramura](http://www.ifa.hawaii.edu/users/teramura)